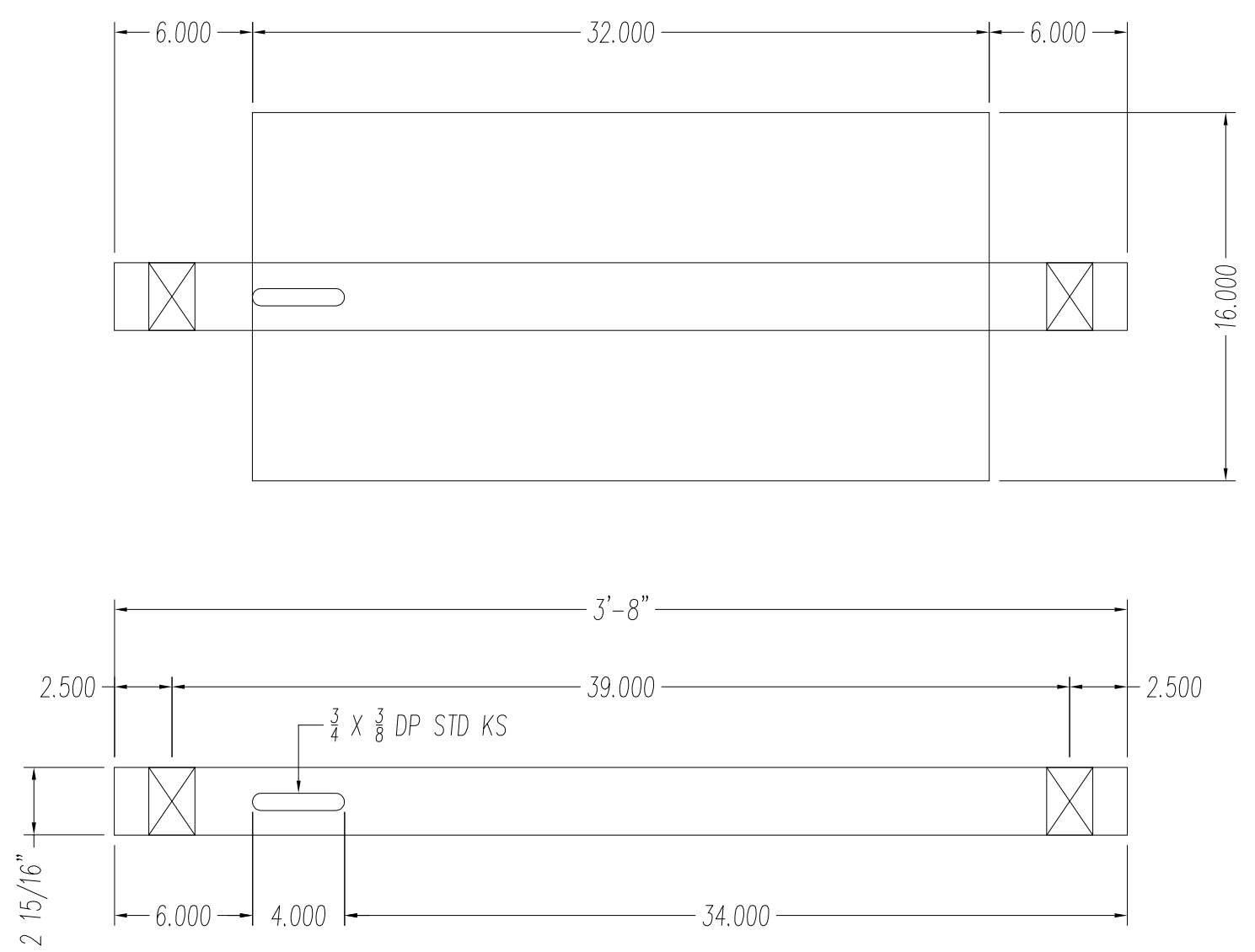
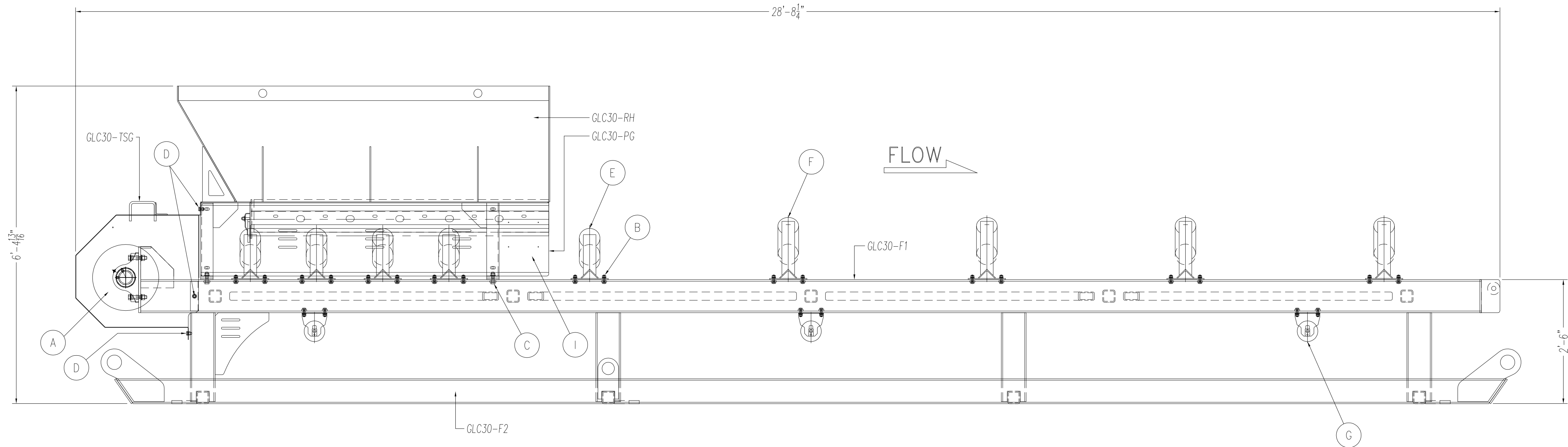
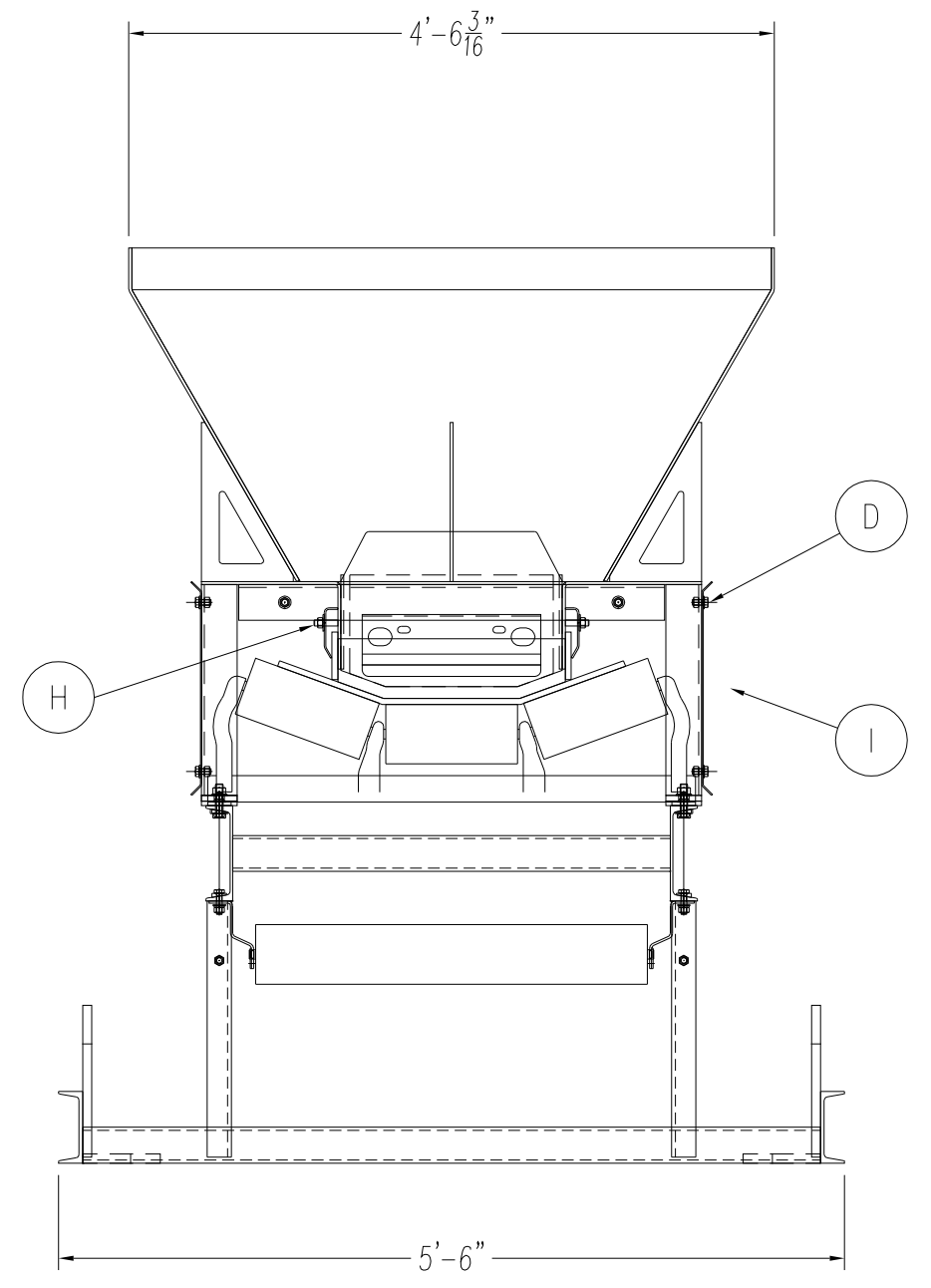


30BW x 30L GLC TAIL SECT. DETAIL

SCALE: 3/4"=1'-0"
NOTE: SOME ITEMS IN CERTAIN VIEWS NOT SHOWN FOR CLARITY

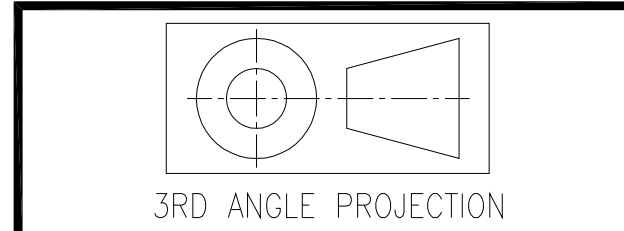


COMPONENT LIST				
ITEM	QTY	DESCRIPTION	MATERIAL	REMARKS
A	1	WP16x32-30 WING TAIL PULLEY	STEEL	XTB30 HUBS
	1	#2 1/2 TOP SHAFT X 44 LGTH	C1045	
	2	DODGE 2-BOLT TYPE E PB #2 1/2 BEARING	ASTM A48	023017
	4	HHCS 3/4-NC X 4 GR.5	ZINC	
	4	HN 3/4-NC GR.5	ZINC	
	8	FW 1/2 USS	ZINC	
	4	LW 1/2 SPLIT	ZINC	
B	48	HHCS 1/2-NC X 1-3/4 GR.5	ZINC	
	48	HN 1/2-NC GR.5	ZINC	
	48	FW 1/2 USS	ZINC	
	48	BW 1/2 BEVEL WASHER	ZINC	
C	4	HHCS 5/8-NC X 2-1/2 GR.5	ZINC	
	4	HN 5/8-NC GR.5	ZINC	
	4	FW 3/8 USS	ZINC	
	4	BW 3/8 BEVEL WASHER	ZINC	
D	14	HHCS 1/2-NC X 1 GR.5	ZINC	
	14	HN 1/2-NC GR.5	ZINC	
	14	FW 1/2 USS	ZINC	
E	5	C20-30 CEMA C 100 TROUGH IDLER		
F	4	C35-30 CEMA C 100 TROUGH IDLER		
G	3	CR-30 CEMA C 100 RETURN IDLER		
	6	CRD-DROP BKT 4-1/2-6		
	3	PRECISION RETURN ROLL GUARD	RG30A	4-1/2 DROP
H	14	1/2-NC WELDED STUD X 2 GR.5	ZINC	
	14	HN 1/2-NC GR.5	ZINC	
	14	FW 1/2 USS	ZINC	
I	1	TRIO MAINTENANCE MANUAL CASE		#138-0020-01

ITEM (A)
SCALE: 1:7

REV	BY	DATE	DESCRIPTION
/	/	/	/
/	/	/	/
/	/	/	/
/	/	/	/

TOLERANCES, UNLESS OTHERWISE SPECIFIED.		
MACH./TOLERANCES	FAB./TOLERANCES	
.XX	± .002	± 1/16 TO 120"
.XX	± .01	± 1/8 OVER 120"
FRACTION	± 1/64	ANGLES ± 1'
ANGLES	± .5'	



TRIO
TRIO ENGINEERED PRODUCTS, INC.
16425 BEAVER RD
ADELANTO, CA 92301
PHONE: 760-246-4454
FAX: 760-246-6275

CUSTOMER: C5-C7-C16	APAC- SARDIS
TITLE: TRIO GLC 30BW TAIL SECTION GENERAL ASSEMBLY	
DRAWN BY: JY	DATE: 07/13/16
SCALE: AS NOTED	SHEET: 1 OF 6
DRAWING NUMBER: 125-0252-01	REV. 00

PDF created with pdfFactory Pro trial version www.pdffactory.com